



# Kentucky Hospital Research & Education Foundation Emergency Preparedness Update for August 19, 2021

## Gov. Beshear: Health Care Heroes Appreciation Week Begins Aug. 22

### *Kentucky reaches record COVID-19 ICU admissions*

([Press release](#)) On Thursday during his weekly Team Kentucky update, Gov. Andy Beshear said Kentucky Health Care Heroes Appreciation Week will begin Aug. 22 as health care workers continue extraordinary efforts to treat patients during the surge in COVID-19 hospitalizations and record ICU admissions.

The Governor noted that, as of this morning, Alabama [has run out](#) of ICU beds, and in one Florida school district, more than 10,000 students [have been quarantined](#) just a week into the school year. Kentucky health care workers and COVID-19 survivors emphasized the life-or-death stakes of Kentuckians signing up for their vaccines as younger and younger patients are becoming critically ill with the delta variant and filling up hospitals. [See a lot more in the full press release.]

**COVID-19 Update:** Dr. Stack said hospitals are facing a variety of challenges caring for patients right now, including: inability to transfer pediatric patients to children’s hospitals due to lack of available beds; health care staffing shortages; inability to transfer patients to higher levels of care due to lack of available beds at other hospitals; needing to use crisis standards of care, where each nurse and/or nursing assistant must care for more patients than they normally would; in some cases, needing to cancel elective or non-emergency procedures in order to free up staff and resources; ongoing EMS staffing shortages amid increased requests for transfers; and individuals coming to emergency departments solely for COVID-19 testing.

Yesterday, Dr. Stack and Cabinet for Health and Family Services (CHFS) Secretary Eric Friedlander signed a [directive](#) allowing people licensed to practice medicine or nursing in other states to serve on an emergency basis in Kentucky.

Dr. Stack said right now, the only people eligible for a third dose of an mRNA vaccine (Pfizer or Moderna) are individuals with moderate to severe immunocompromised conditions. “If you are one of those people, you can go to a pharmacy or clinic and get your third dose,” said Dr. Stack. “I have written a [letter](#) deeming that all full-time, long-term care residents qualify for a third dose by virtue of the medical conditions that put residents in these facilities and the high mortality rate in these facilities for much of the pandemic.”

As of today, 2,436,044 Kentuckians have received at least their first dose of a COVID-19 vaccine; 6,935 have been vaccinated over the past 24 hours. From the [KDPH Daily Report](#), it is noted that there were 4,836 new cases, with 1,275 cases aged 18 or under. The positivity rate is 12.75%. 1,708 are hospitalized with COVID-19, with 481 in the ICU, and 242 on a vent.

-----

## Biden says nursing home staff must get COVID vaccines for federal funding

(Axios) President Biden said Wednesday that nursing home and long-term care facilities must vaccinate their staff against COVID-19 to continue to receive federal Medicare and Medicaid funding in response to lagging vaccination rates and a surge of new cases from the Delta variant of the coronavirus.

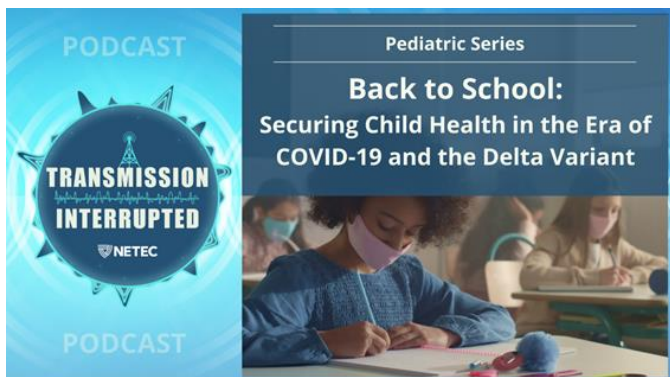
Learn more: <https://www.axios.com/biden-nursing-home-staff-coronavirus-vaccines-acc2a827-4806-4f5c-a967-c5c5b28b48d8.html>

-----

## CIDRAP - President calls for schools to be allowed COVID mask mandates

Read more: <https://www.cidrap.umn.edu/news-perspective/2021/08/biden-calls-schools-be-allowed-covid-mask-mandates>

-----



The National Emergency Special Pathogens Training and Education Center (NETEC) will be hosting a podcast on Securing Child Health in the Era of COVID-19 and the Delta Variant. The program will be done in partnership with the CDC, is funded by ASPR.

Dr. Vanessa Raabe, Adult and Pediatric Infectious Disease Physician at NYU Grossman School of Medicine, and special guest, Dr. Andi Shane, Head of Pediatric Infectious Diseases at Emory University and Children’s Healthcare of Atlanta, will discuss the return to the classroom for children, school nurses, and healthcare providers across the country. Topics

include strategies to help prevent COVID-19 in schools, the positive and negative impacts of universal masking, and the importance of supporting our school nurses.

The NETEC podcast, **Transmission Interrupted**, is available [on their website](#) and [on all major listening platforms](#) (where you can subscribe and never miss an episode)! You can also access the podcast via the [Captivate platform](#).

LINK to podcast: <https://netec.org/podcast/back-to-school-securing-child-health-in-the-era-of-covid-19-and-the-delta-variant/>

### ----- **Convalescent plasma didn't prevent severe COVID-19 in high-risk patients**

(CIDRAP [News Scan](#)) Early use of convalescent plasma didn't prevent COVID-19 progression in a group of high-risk adult outpatients, concludes a National Institutes of Health (NIH) study yesterday in the *New England Journal of Medicine (NEJM)*.

The randomized, controlled Clinical Trial of COVID-19 Convalescent Plasma in Outpatients (C3PO) trial enrolled more than 500 participants who visited 1 of 48 US emergency departments within 7 days of COVID-19 symptom onset. Enrollees were 50 and older and had one or more risk factors for severe COVID-19 (eg, obesity, high blood pressure, diabetes, heart disease, chronic lung disease).

There was no significant difference between the two groups of patients in disease progression (ie, need to seek further emergency or urgent care, hospital admission, or death) in the 15 days after treatment. Among the 511 participants, 30% in the convalescent plasma group and 31.9% in the placebo group experienced disease progression. Illness severity and days out of the hospital were similar in both groups.

### ----- **Hospital Highlights**

- ARH officials fear for the worst as ICU beds are running out ([article](#))
- CHI Saint Joseph Health implements \$15/hour minimum wage ([article](#))
- Owensboro Health Regional Hospital receives stewardship award ([article](#))
- Hospital in Morehead converts unit into surge COVID ICU ([article](#))
- UK HealthCare preparing for more patients <https://www.lex18.com/news/uk-healthcare-preparing-for-more-patients>

### ----- **Louisiana Ambulance Services drowning in COVID-19**

CBS feature: <https://www.cbsnews.com/news/louisiana-covid-19-ambulance/>

### ----- **Watch Your Step! It's Baby Copperhead Season In Kentucky and They're Everywhere**

(WKDQ – by Leslie Morgan) Living in the country, you become very used to seeing snakes every now and then. But, when I moved to Kentucky it was hard to get used to seeing Copperheads. I have to admit, I haven't seen a lot since I moved here. Every once in a while, one will show up slithering across the road, but that's it. Well, I've seen so many this summer and I wanted to find out more about these very unique snakes. Here is what I found out.

Right now, you will start seeing even more Copperheads because it's baby Copperhead season. Copperheads start to appear in the Spring to mate. The Copperhead babies are typically born in late August, into September, or even October in some states. Unlike most snakes, Copperheads don't lay eggs so their babies aren't hatched. The Copperhead babies are born LIVE. Female copperheads can have one litter per year, where they can birth 2 to 18 snakes that are 8 to 10 inches long when born.

Read more: <https://wkdq.com/baby-copperhead-season-in-kentucky/>

### **Gov. [Beshear Requests Individual Assistance](#) from Federal Government for Nicholas County Flood Event**

Press release: <https://kentucky.gov/Pages/Activity-stream.aspx?n=GovernorBeshear&prId=926>

### **Hospitals can apply for Regional Disaster Response System demonstration grant**

([AHA Today](#)) Hospitals and other eligible entities [can apply](#) through Sept. 20 for \$3 million in fiscal year 2021 funding from the Department of Health and Human Services' Office of the Assistant Secretary for Preparedness and Response to establish a [Regional Disaster Health Response System](#) demonstration site. The recipient will focus on building partnerships to effectively prepare for and respond to patient management in disasters, including clinical specialty and medical surge capabilities, building on lessons learned from three demonstration sites established in 2018 and 2020.

The Khref Emergency Preparedness Update is assembled several times a week. When events make it necessary, the Update may be sent out several times a day to keep our hospital and the healthcare community advised on preparedness news and information. Most of this information is compiled from open sources, and where possible reference links will be provided. There is an archive of [Emergency Preparedness Updates available here](#). If you would like to add or delete, or have something you would like to contribute to a future edition of the Emergency Preparedness Update, please contact [Preparedness@kyha.com](mailto:Preparedness@kyha.com) (include your current email address). The preparedness program for the Kentucky Hospital Association (KHA) and Khref are supported by US DHHS ASPR HPP funds through a contract with Kentucky Public Health.