



Kentucky Hospital Research & Education Foundation Emergency Preparedness Update for June 21, 2021

7 killed, more than 40 injured in 10 mass shootings across the US over the weekend

(CNN) As Americans continue to [come out of coronavirus isolation](#) and states [lift restrictions](#) on gatherings, shootings continue to plague the nation, with 10 mass shootings occurring in the US since Friday night. Seven people were killed and at least 45 were injured in the shootings, according to the [Gun Violence Archive](#) (GVA). Among the victims were at least two children, a 10-year-old and a 15-year-old, police said. The latest shootings are among a streak of deadly violent weekends the nation has seen in the past few weeks. Last weekend, there were also [10 mass shootings](#) across seven states that killed 12 people and injured 57 more, data from GVA shows. GVA reports there have been 293 mass shootings in 2021 so far. CNN defines a mass shooting as four or more people shot, not including the shooter. A weekend is tracked from Friday afternoon through Sunday overnight.

Read more: <https://www.cnn.com/2021/06/21/us/gun-violence-weekend-roundup/index.html>

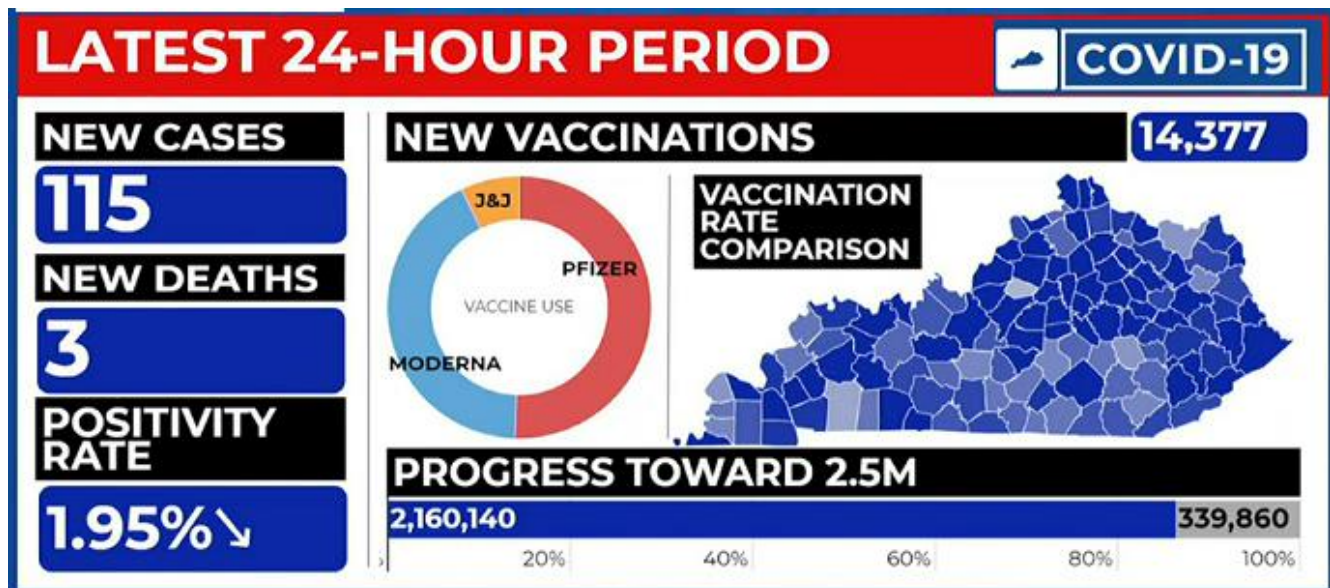
Related - Weekend gun violence shakes gatherings in cities across U.S.

<https://www.nbcnews.com/news/us-news/weekend-gun-violence-shakes-gatherings-cities-across-north-america-n1271504>

Gov. Beshear: Disaster Food Benefits Available to More Kentuckians Affected by Floods

([Full Press Release](#)) More Kentuckians affected by recent flooding may be eligible to apply for disaster food benefits during a six-day application process that begins Wednesday, June 23 and ends Monday, June 28, 2021. These are benefits for flood-affected residents who lived or worked in the following counties between Feb. 26 and March 14, 2021, which received an Individual Assistance Declaration from the Federal Emergency Management Agency (FEMA): Anderson, Boyd, Clark, Fayette, Franklin, Greenup, Jackson, Jessamine, Knott, Laurel, Lawrence, Leslie, Letcher, Lincoln, Madison, Morgan, Owsley, Perry, Pulaski, Rockcastle, Warren and Woodford.

Residents of affected counties who would not ordinarily be eligible under SNAP guidelines may qualify temporarily if they lived or worked in these flooded areas of Kentucky. A person may be eligible for D-SNAP benefits if their home or belongings were damaged or destroyed and if they have unreimbursed disaster-related expenses or a loss or reduction of income as a result of the flooding.



Learn more: <https://www.wkyt.com/app/2021/06/21/gov-beshear-reports-115-new-covid-19-cases-195-positivity-rate/>

US COVID-19 cases continue to fall—as do vaccinations

(CIDRAP) The daily number of new COVID-19 cases continues to drop across the country, to tallies not seen since 15 months ago, when the pandemic began. But new Centers for Disease Control and Prevention (CDC) data show that young adult vaccine uptake is below that of older adults.

The United States reported 3,892 new COVID-19 cases yesterday and 83 deaths, according to the Johns Hopkins COVID-19 [tracker](#). Those numbers contribute to a 7-day average of new infections of 11,308, a 23% decline over the previous week, according to data from the [Washington Post](#).

New daily deaths fell by 19.7% in the past week, and COVID-19–related hospitalizations fell by 8.4%. Read more: <https://www.cidrap.umn.edu/news-perspective/2021/06/us-covid-19-cases-continue-fall-do-vaccinations>

**KY Office of Highway Safety partners with law enforcement
on speed awareness campaign**

Read more: <https://www.wymt.com/2021/06/21/kentucky-office-highway-safety-partners-with-law-enforcement-speed-awareness-campaign/>

KDPH Files Revised Mask Mandate Regulation

*KHA COVID-19 Update) The Kentucky Department for Public Health (KDPH) filed 902 KAR 2:212E, a revised mask mandate administrative regulation, on Friday, June 18. The new mask regulation requires masks to be worn if a person is:

- Riding on public transportation or paratransit;
- In a health care setting; or
- In a long-term care setting.

The public comment period on this E-reg ends August 31, 2021. [Regulation](#)

**John Hopkins: Health Security Headlines
Extracts from [June 21, 2021](#)**

[Preliminary Findings of mRNA Covid-19 Vaccine Safety in Pregnant Persons](#) (*NEJM*) Preliminary findings did not show obvious safety signals among pregnant persons who received mRNA Covid-19 vaccines. A total of 35,691 v-safe participants 16 to 54 years of age identified as pregnant. Injection-site pain was reported more frequently among pregnant persons than among non-pregnant women, whereas headache, myalgia, chills, and fever were reported less frequently. Among 3958 participants enrolled in the v-safe pregnancy registry, 827 had a completed pregnancy, of which 115 (13.9%) resulted in a pregnancy loss and 712 (86.1%) resulted in a live birth (mostly among participants with vaccination in the third trimester). [CureVac COVID Vaccine Let-down](#)
[Spotlights mRNA Design Challenges](#) (*Nature*) Two vaccines made using messenger RNA (mRNA) have proved spectacularly successful at warding off COVID-19, but a third mRNA-based candidate has flopped in a final-stage trial, according to an initial report released this week. Researchers are now asking why — and some think that choices about the type of mRNA chemistry used might be to blame. Any insight could help to guide the future design of mRNA vaccines against COVID-19 or other diseases.

[Moderna plans to expand COVID-19 vaccine production: WSJ](#) (*Reuters*) Moderna Inc (MRNA.O) is adding two new production lines at its COVID-19 vaccine manufacturing plant in Massachusetts, in a bid to prepare for making more booster shots, the Wall Street Journal reported on Monday.

[CDC Director: Delta Variant to 'Probably' Become Dominant Strain in U.S.](#) (*Politico*) The very contagious and possibly more harmful Delta variant of the coronavirus “probably” will become the dominant strain in the United States in the coming months, Rochelle Walensky, director of the Centers for Disease Control and Prevention, said Friday on "Good Morning America." “It's more transmissible than the Alpha variant or U.K. variant that we have here. We saw that quickly become the dominant strain in a period of one or two months,” Walensky said. “I anticipate that is going to be what happens with the Delta strain here.”

[In A First, Iran's Sole Nuclear Power Plant Undergoes Emergency Shutdown](#) (*NPR*) Iran's sole nuclear power plant has undergone an unexplained temporary emergency shutdown, the country's state TV reported. An official from the state electric company Tavanir, Gholamali Rakhshanimehr, said on a talk show that aired on Sunday that the Bushehr plant shutdown began on Saturday and would last "for three to four days." Without elaborating, he said that power outages could result. This is the first time Iran has reported an emergency shutdown of the plant in the southern port city of Bushehr. It went online in 2011 with help from Russia. Iran is required to send spent fuel rods from the reactor back to Russia as a nuclear nonproliferation measure.

UK's Well@Work Podcast- Episode 23: Onboarding

Listen here: <https://www.youtube.com/watch?v=AAVeHKJ0kQU&t=16s>

You can also visit the episode page for the audio version and transcript!

<https://www.uky.edu/ctac/content/wellwork-podcast-episode-23-onboarding>

Canada Says Border Won't Fully Reopen Until 75% Vaccination Rate

(*Bloomberg*, June 20, 2021) The U.S. border is unlikely to be completely reopened until 75% of Canadians are fully vaccinated, Canada's border chief said on Sunday in comments likely to fuel mounting impatience in both countries at the restrictions. The world's longest undefended border has been closed to most travel since March 2020. On Friday, Canada extended the restrictions until at least July 21, though it's expected to announce the easing of some rules Monday for fully vaccinated citizens. <[Read more](#)>

Kentucky still ranks 37th in well-being of children in latest Kids Count Data Book, but isn't progressing as much as other states

(KY Health News) The annual **Kids Count Data Book** on children's well-being, released June 21 by the **Annie E. Casey Foundation** and **Kentucky Youth Advocates**, again ranks Kentucky 37th in the nation for the overall well-being of its children.

The latest data are for 2019, and are largely compared with data from 2010. The report rates children's overall well-being through 16 indicators in four major domains: health, economic security, education and family and community.

Overall, Kentucky saw improvement in 11 of the 16 indicators, did worse in three of them and stayed the same on one. One measure did not show a comparison.

FCC changes how emergency alerts appear on your phone

(*Engadget*, June 18, 2021) Get ready to say goodbye to Presidential Alerts — in a manner of speaking. The FCC has adopted rules that replace the earlier warnings with "National Alerts" that include both the earlier non-optional messages as well as FEMA Administrator alerts for natural disasters and similar crises. As the agency explained in March, this lets officials honor a new requirement for the FEMA alerts without having to create a new category or make significant "technical changes." <[Read more](#)>

InfraGard Webinar: Spoofing and Spear-Phishing: Abuse and Misuse of Social Media and Other Platforms

When: July 1, 2021

Time: 1:00pm to 2:00pm EST

Register Here: [Spoofing and Spear-Phishing](#)

Passcode: 119731

Or One tap mobile : US: +16465588656, 91389683404# or +13017158592, 91389683404#

Methane menace: Aerial survey spots 'super-emitter' landfills

(Reuters) The U.S. waste-management industry has become a darling of environmentally minded investors for its work in recycling trash and harvesting gases from landfills as an alternative fuel. Leading firms Waste Management Inc (WM.N) and Republic Services Inc (RSG.N) are included in the Dow Jones Sustainability World Index, a benchmark for socially conscious investing.

But the waste industry may be doing far more harm to the planet than investors think, according to a years-long aerial survey commissioned by California air-quality regulators. The survey found "super-emitter" landfills accounted for 43% the measured emissions of the potent greenhouse gas methane - outpacing the fossil-fuel and agricultural sectors.

NASA's Jet Propulsion Laboratory in Pasadena and leak-detection firm Scientific Aviation have been conducting the flyovers since 2016. They found that some trash dumps operated by top U.S. landfill companies including Republic Services and Waste Management have been leaking methane at rates as much as six times the facility-level estimates from the U.S. Environmental Protection Agency (EPA).

Full Reuters story: <https://www.reuters.com/business/sustainable-business/methane-menace-aerial-survey-spots-super-emitter-landfills-2021-06-18/>

The KHREF Emergency Preparedness Update is assembled several times a week. When events make it necessary, the Update may be sent out several times a day to keep our hospital and the healthcare community advised on preparedness news and information. Most of this information is compiled from open sources, and where possible reference links will be provided. There is an archive of [Emergency Preparedness Updates available here](#). If you would like to add or delete, or have something you would like to contribute to a future edition of the Emergency Preparedness Update, please contact Preparedness@kyha.com (include your current email address). The preparedness program for the Kentucky Hospital Association (KHA) and KHREF are supported by US DHHS ASPR HPP funds through a contract with Kentucky Public Health.