



Kentucky Hospital Research & Education Foundation Emergency Preparedness Update for January 17, 2021

Sunday COVID-19 update: 2,362 cases, 34 more deaths

(LEX 18) — On Sunday, Governor Andy Beshear's office reported 2,362 more cases of COVID-19 in Kentucky. There have been a total of 326,675 cases of COVID-19 in the state since the pandemic hit in early March 2020. 34 more Kentuckians have died after contracting the virus. The death toll during the pandemic is now 3,127. The state's positivity rate is 11.49%. There are currently 1,602 COVID-positive patients at Kentucky hospitals. 410 of those patients are in the ICU and 212 are using a ventilator.

Source: <https://www.lex18.com/news/covering-kentucky/sunday-covid-19-update-2-362-cases-34-more-deaths>

Most Ky. measures of pandemic ease slightly, but 32 more deaths keep that trend at a high; prison in Morgan County beset by virus

(KY Health News) Kentucky recorded 3,096 new cases of the novel coronavirus Saturday, lowering the seven-day average for the fourth straight day, to 3,438. The percentage of Kentuckians testing positive for the virus in the past week declined again from a record high, for the fifth day out of six, to 11.74%.

But at the same time, the state reported 32 more deaths from Covid-19, pushing its mortality trends to new highs. The seven-day average is 31 deaths per day, and the 14-day average is 28.2, both records.

Confirmed COVID-19 Cases by Institution as of 01-15-21

Location	Active Staff Cases	Total Staff Cases	Total Staff Deaths	Active Inmate Cases	Total Inmate Cases	Total Inmate Deaths
Bell County Forestry Camp	3	26	0	0	187	0
Blackburn Correctional Complex	1	30	0	0	215	1
Eastern Kentucky Correctional Complex	80	142	0	929	934	0
Green River Correctional Complex	3	67	0	0	368	3
Kentucky Correctional Institution for Women	1	60	0	18	403	0
Kentucky State Penitentiary	3	22	0	0	1	1
Kentucky State Reformatory	3	80	2	3	534	28
Lee Adjustment Center	0	65	0	0	698	1
Little Sandy Correctional Complex	1	54	0	1	575	1
Luther Luckett Correctional Complex	43	58	1	612	612	0
Northpoint Training Center	16	93	1	25	896	4
Roederer Correctional Complex	24	63	1	152	600	0
Southeast State Correctional Complex	0	7	0	8	8	0
Western Kentucky Correctional Complex	2	25	0	0	66	0
Total	180	792	5	1748	6097	39

Morgan County, site of a major virus outbreak at a state prison, continued to have the state's highest infection rate, measured as the average number of cases per 100,000 residents over the past seven days. Counties averaging more than 100 per 100,000 (1 per 1,000) are Morgan, 596; Clinton, 200; Oldham, 173; Wayne, 131; Hancock, 111; Harrison, 107; Taylor, 106; and Butler, 104. The statewide rate is 72.6.

Yesterday's updated Corrections Department [report](#) shows that almost half the inmates at the **Eastern Kentucky Correctional Complex** in West Liberty have active cases of the virus: 929 out of a listed population of 1,938. Eighty employees of the prison also have active cases.

Some states are seeing higher numbers of Covid-19 cases as others ease restrictions

(CNN) While some states are seeing improving outlooks in their battle against Covid-19, other parts of the nation are hitting tragic records.

On Saturday, Johns Hopkins University reported 198,218 new coronavirus cases and 3,286 new deaths in the US. More than 395,000 people have died since the beginning of the pandemic. There were 126,139 Covid-19 hospitalizations [reported in the US](#) on Saturday -- a slight decrease from a record high 10 days ago. There have been more than 100,000 Covid-19 hospitalizations in the US for the last 46 consecutive days.

A recent coronavirus projection from the University of Washington estimates more than 566,000 deaths by May 1 in the US. The university's Institute of Health Metrics and Evaluation (IHME) said the figure [could be lowered](#) by thousands with universal mask requirements

The latest figures from the CDC show 12.2 million vaccines have been administered in the US. More than 10.5 million people [have received](#) their first injections, while 1.6 million have finished their vaccination cycle with a second dose. Full story: <https://www.cnn.com/2021/01/17/health/us-coronavirus-sunday/index.html>

Nursing homes make big push to change minds of workers who refused vaccine

(NBC) The pandemic has taken a deadly toll on A.G. Rhodes Cobb, a nursing home on the outskirts of Atlanta. Twelve [residents have died after contracting Covid-19](#). Forty-four staff members have fallen ill.

But despite their up-close look at the virus's impact, most workers at the facility have been reluctant to get vaccinated. At the three clinics held last month at A.G. Rhodes Cobb and two other facilities in Georgia run by the same company, about 30 percent of staff members chose to get vaccinated, while 57 percent of residents opted in, [according to management](#).

"Some people think if you get the vaccine, you'll get sick. And some are afraid and distrusting of the government," said Sonya Williams, the activities director at A.G. Rhodes Cobb, who was vaccinated in late December.

Nursing homes across the country are facing the same struggle, as workers have been more reluctant than residents to be vaccinated. Though rates vary widely, the American Health Care Association, which represents for-profit nursing homes, estimates that about 50 percent of long-term care staff members have been hesitant to get vaccinated. The majority of direct-care workers in nursing homes are people of color, who have generally been [more hesitant to get vaccinated](#), based in part on their distrust of the federal government and the United States' history of medical racism.

Full story: <https://www.nbcnews.com/news/us-news/nursing-homes-make-big-push-change-minds-workers-who-refused-n1254509>

J&J Vaccine Showing Good Response

(CNN Health) Early stage trials of Johnson & Johnson's experimental coronavirus vaccine show it generated an immune response in nearly all volunteers, with minimal side-effects, after a single dose.

The company expects to report details of more advanced trials later this month and is hoping to apply for authorization from the US Food and Drug Administration soon after.

Researchers who tested the vaccine in a combined Phase 1-2 trial -- mostly meant to show safety -- found either one or two doses of the vaccine generated both antibody and T-cell responses against the coronavirus. The trials were not designed to show whether the vaccine protected people against either infection or symptoms of coronavirus -- that's what the ongoing Phase 3 trials are designed to do.

Read more: <https://www.cnn.com/2021/01/13/health/johnson-coronavirus-vaccine-early-trials/index.html>

Top Glove Screens Malaysia Workers After Positive Test Result



(Bloomberg) Top Glove Corp., the world's biggest rubber-glove maker, is screening more workers after some of them at four of its Malaysian factories tested positive for the coronavirus.

The company is "closely monitoring" the situation and is in constant discussion with the management team on development and updates of all its employees involved, the company said in a statement on Saturday.

The Malaysian manufacturer is seeking to avoid a repeat of last year when authorities temporarily [closed](#) 28 of its factories after more than 4,000 workers tested positive for the virus. The government in December [ended](#) a 28-day lockdown on Top Glove's worker dormitories after infections there

declined. Full story: <https://www.bloomberg.com/news/articles/2021-01-17/top-glove-screens-malaysia-workers-after-positive-test-results>

China builds 1,500 Room Hospital in 5 days After Surge in Virus Cases

Full AP story: <https://apnews.com/article/beijing-health-coronavirus-pandemic-wuhan-china-c555525ecdaea032b6d1bc1ec2894513>

Funeral homes overwhelmed by waves of COVID-19 deaths

(CBS) the startling death toll from the coronavirus has put an even greater strain on many funeral homes across the U.S., with the daily number of fatalities topping [4,000 per day in January](#). Roughly 390,000 Americans have died in total, and the Centers for Disease Control and Prevention now projects up to 90,000 more deaths in the next three weeks alone.

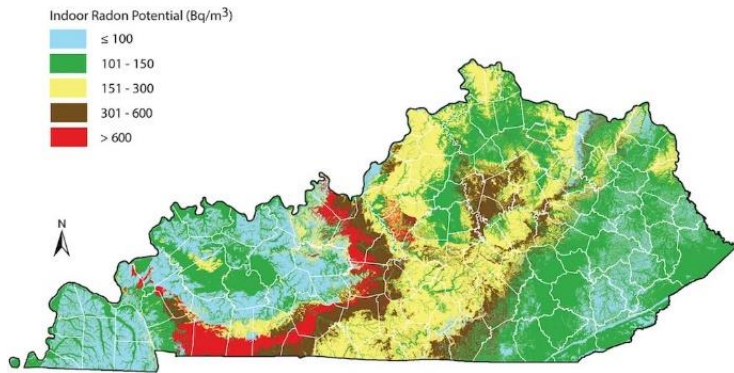
As a result, funeral homes, crematories and other "last responders" are seeing soaring demand for their services, especially in coronavirus hotspots such as [Los Angeles](#). A National Funeral Directors Association (NFDA) [survey](#) found that more funeral homes are cremating bodies instead of hosting casket burials, a quicker service amid the rising death toll. The increase in deaths has been particularly tough on family-owned funeral

homes in small or rural communities because such businesses typically have fewer workers, funeral directors said. Learn more: <https://www.cbsnews.com/news/covid-deaths-funeral-homes-overwhelmed/>

As pandemic keeps us home, risk of exposure to cancer-causing radon gas increases

(KyForward) This year alone, [approximately 4,890 Kentuckians](#) will be diagnosed with lung cancer, yet the disease remains highly preventable.

While nearly 80 percent of lung cancers are caused by tobacco smoke, exposure to radon gas is the [second leading cause](#) of lung cancer, accounting for approximately 21,000 cases of lung cancer each year in the U.S.



Radon gas exposure is an invisible threat to your health, and you cannot taste or smell it. While the naturally occurring gas is present at low levels in outdoor air, our greatest risk of exposure is in the home, where the gas enters and becomes trapped, and where we spend most of our time.

Breathing radon is dangerous for everyone but even more harmful when also exposed to tobacco smoke or e-cigarette aerosol.

Radon gas comes from rocks, so this geological map suggests risk levels, but there are other factors such as construction and ventilation. [For](#)

[details and more about the map, click here.](#) (Click for larger image)

Given the global pandemic and the recommended public health guidelines, individuals and families are spending more time than ever at home. With [January being National Radon Action Month](#), there is no better time than now to create a healthy home.

Thankfully, there is something you can do to lower your risk of exposure to dangerous radon gas. Some local health departments, as well as the [Kentucky Radon Program](#), offer free short-term radon test kits to Kentucky residents.

Full story: <https://www.kyforward.com/stacy-stanifer-as-pandemic-keeps-us-home-risk-of-exposure-to-cancer-causing-radon-gas-increases/>

Heavy fortified statehouses around the US see small protests

(AP) Small groups of right-wing protesters — some of them carrying rifles — gathered outside heavily fortified statehouses around the country Sunday, outnumbered by National Guard troops and police brought in to prevent a repeat of the violence that erupted at the U.S. Capitol. As darkness fell, there were no reports of any clashes.

Security was stepped up in recent days after the FBI warned of the potential for armed protests in Washington and at all 50 state capitol buildings ahead of President-elect Joe Biden's inauguration on Wednesday.

Crowds of only a dozen or two demonstrated at some boarded-up, cordoned-off statehouses, while the streets in many other capital cities remained empty. Some protesters said they were there to back President Donald Trump. Others said they had instead come to voice their support for gun rights or decry government overreach.

Full AP story: <https://apnews.com/article/joe-biden-capitol-siege-donald-trump-coronavirus-pandemic-racial-injustice-afde8d98740e057b340efa63c2d40007>

The KHEREF Emergency Preparedness Update is assembled several times a week. When events make it necessary, the Update may be sent out several times a day to keep our hospital and the healthcare community advised on preparedness news and information. Most of this information is compiled from open sources, and where possible reference links will be provided. There is an archive of [Emergency Preparedness Updates available here](#). If you would like to add or delete, or have something you would like to contribute to a future edition of the Emergency Preparedness Update, please contact Preparedness@kyha.com (include your current email address). The preparedness program for the Kentucky Hospital Association (KHA) and KHEREF are supported by US DHHS ASPR HPP funds through a contract with Kentucky Public Health.