



Kentucky Hospital Research & Education Foundation Emergency Preparedness Update for April 12, 2020

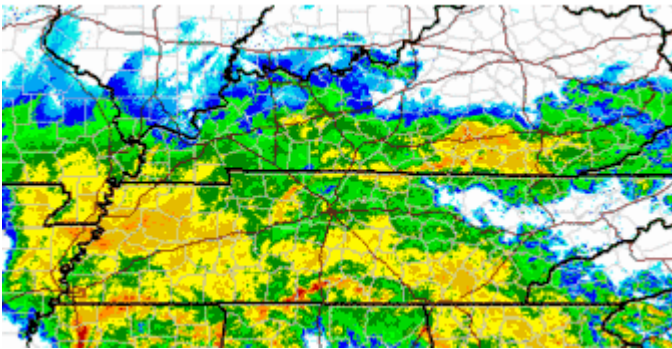
Severe weather potential update

NWS Louisville: A couple different waves of showers and storms will push through the region tonight. The best chance for severe weather will be across south central Kentucky this evening, but another wave of storms will affect most of the area toward daybreak Monday. Main hazards will be locally damaging winds (gusts to 50 MPH) and brief heavy rainfall, but hail and brief tornadoes can't be ruled out.

3:30 PM ET Briefing slides cover the state:

<https://www.weather.gov/media/lmk/briefing/briefingslides.pdf>

[For those counties on the TENN border to the corner of KY-TN-VA] - **NWS Nashville:** Severe thunderstorms with damaging winds of 60-75mph, large hail, and a few tornadoes can be expected this afternoon and evening across Middle Tennessee. Also, heavy rainfall with localized flash flooding may occur especially across southern and eastern Middle Tennessee.



NWS Jackson: There is a chance of thunderstorms this evening and tonight. Should they occur, they may produce damaging winds. A weak tornado cannot be ruled out. Even

outside of thunderstorms, winds should gust between 40 and 50 mph at times, especially late tonight into the day on Monday. There is also a possibility of heavy rainfall this evening and tonight.

NWS Paducah: There is a threat for severe thunderstorms this evening. Damaging winds, torrential rainfall, and lightning will be the primary hazards. A couple brief tornadoes are also possible, mainly in western Kentucky. Heavy rainfall amounts may cause localized flooding issues this afternoon and evening. The highest risk of flooding is in western Kentucky, where amounts may exceed 1.5 inches. Wind gusts of 40 to 45 mph are likely. Refer to the Wind Advisory product for details.

NWS Wilmington: Wind Advisory - Showers and a chance of thunderstorms can be expected tonight. A few severe thunderstorms will be possible, especially late tonight. Although damaging winds will be the primary severe weather threat, a tornado cannot be ruled out. In addition, periods of heavy rainfall may result in localized flooding.

The Khref Emergency Preparedness Update is assembled several times a week. When events make it necessary, the Update may be sent out several times a day to keep our hospital and the healthcare community advised on preparedness news and information. Most of this information is compiled from open sources, and where possible reference links will be provided. There is an archive of [Emergency Preparedness Updates available here](#). If you would like to added or deleted, or have something you would like to contribute to a future edition of the Emergency Preparedness Update, please contact rbartlett@kyha.com (include your current email address). The preparedness program for the Kentucky Hospital Association (KHA) and Khref are supported by US DHHS ASPR HPP funds through a contract with Kentucky Public Health.